

How to Copy a MiniDV Tape

1. Ask for the MiniDV camera and remote at the New Media Assistant desk.
2. Make sure you are using the PC and that the MINIDV CAMERA button on the switch box is pushed in.

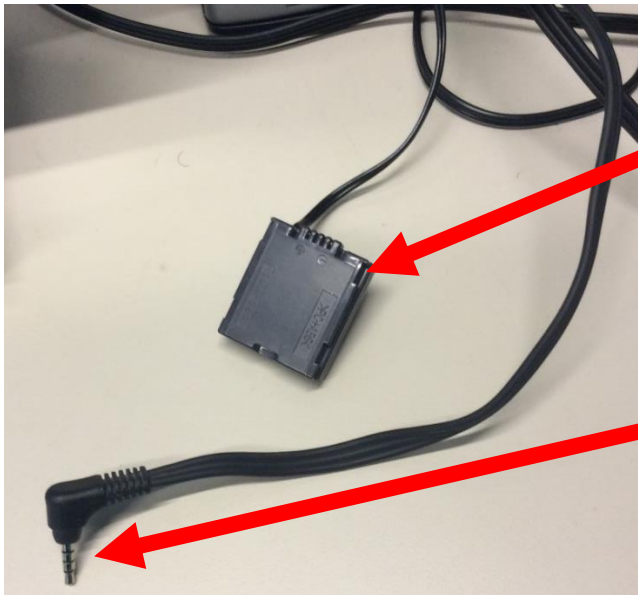


Switch Box



MINIDV CAMERA Button

3. You will need the power pack and the AV cable. You will find them on the desk behind the computer screen.



Power Pack

AV cable

4. Raise the eyepiece and carefully attach the power pack to the camera by sliding it down into the port from the top. The arrow on the pack should be visible and pointing down. You will hear a quiet click when it is in place.



Raise Eyepiece



Arrow Points Down



Pack Properly Attached

Pack Goes Here

5. Push the Open/Eject slider forward to unlock the film door. Carefully push the plastic cover to the right and down to open the film door. The cartridge drawer will automatically raise and open.



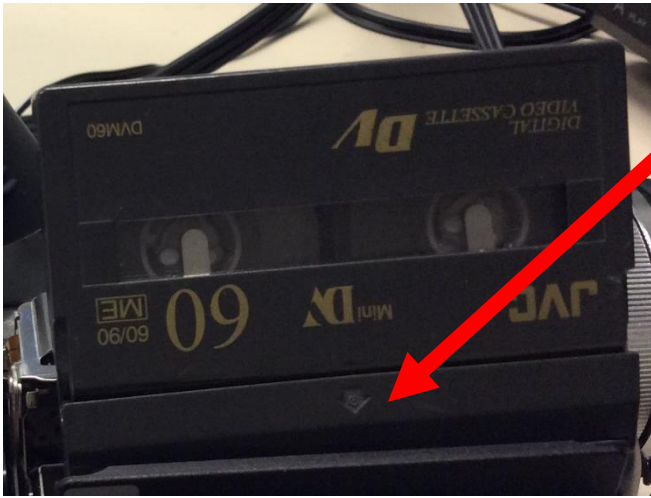
Slide Forward

Carefully Push This Open

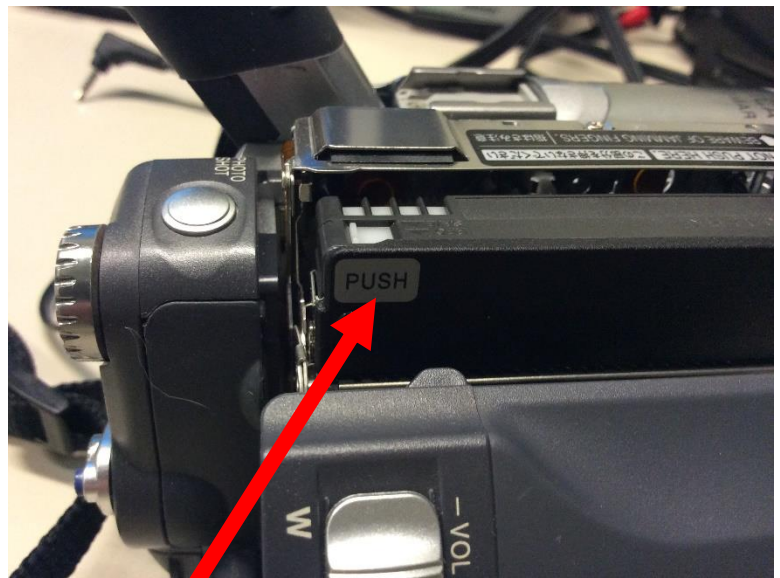
This Will Rise and Open



- Put your MiniDV cartridge into the drawer with the arrow on the cartridge pointing down and to the outside of the camera. Carefully close the cartridge drawer by gently pinching the drawer on the word PUSH. Once you have closed the cartridge drawer the camera will automatically lower it back into the camera. Once the drawer has stopped moving, carefully close the plastic cover. It will click and the Open/Eject slider will lock.



Arrow Points Down

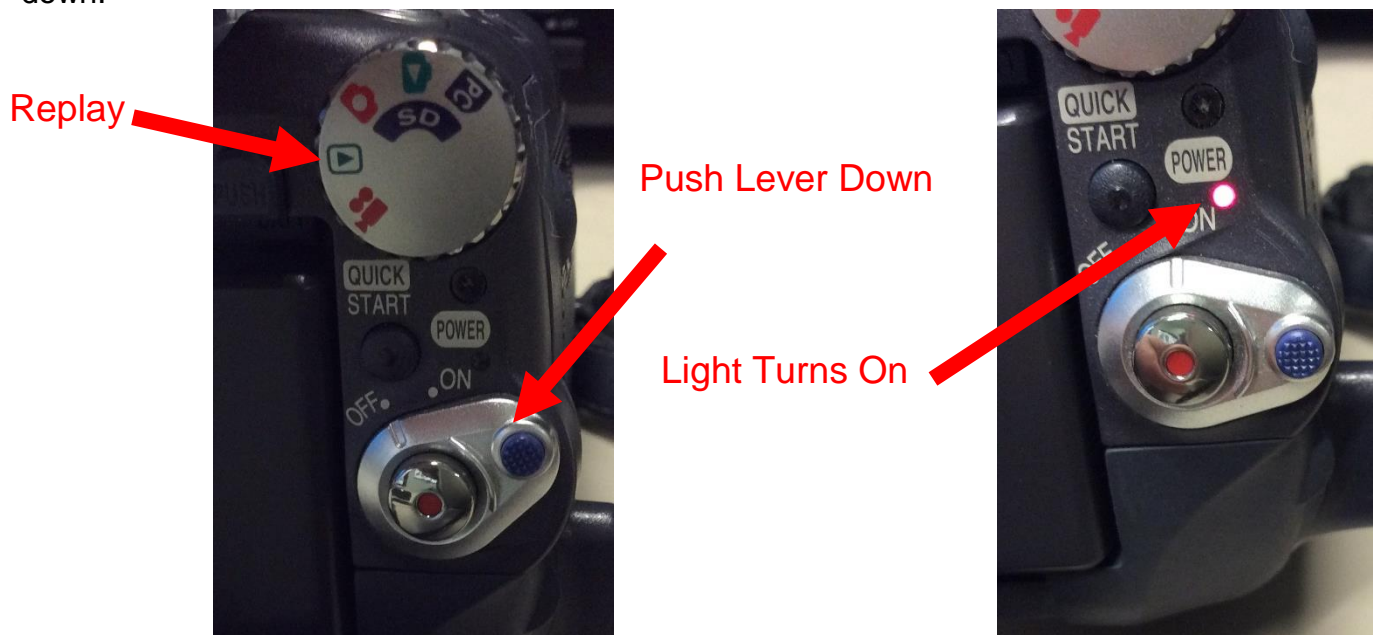


Pinch Here

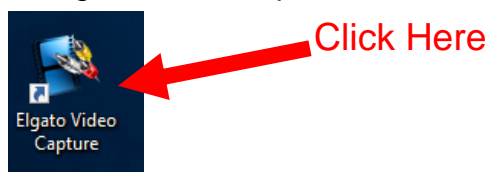
7. Open the cable port cover on the right side of the camera and plug the AV cable into the bottom jack.



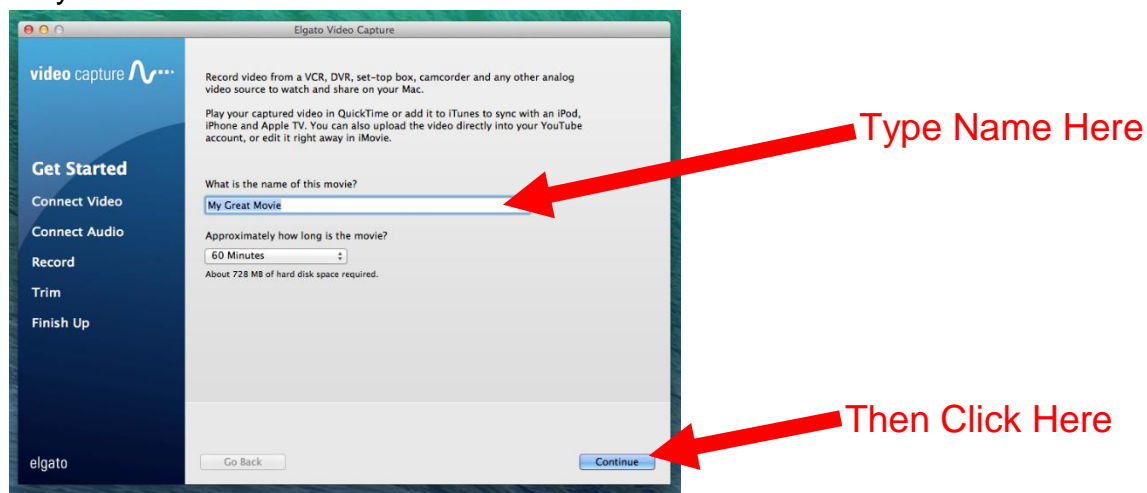
8. Make sure the camera is set for replay and then turn on the camera by pushing the power lever down.



9. Open Elgato Video Capture



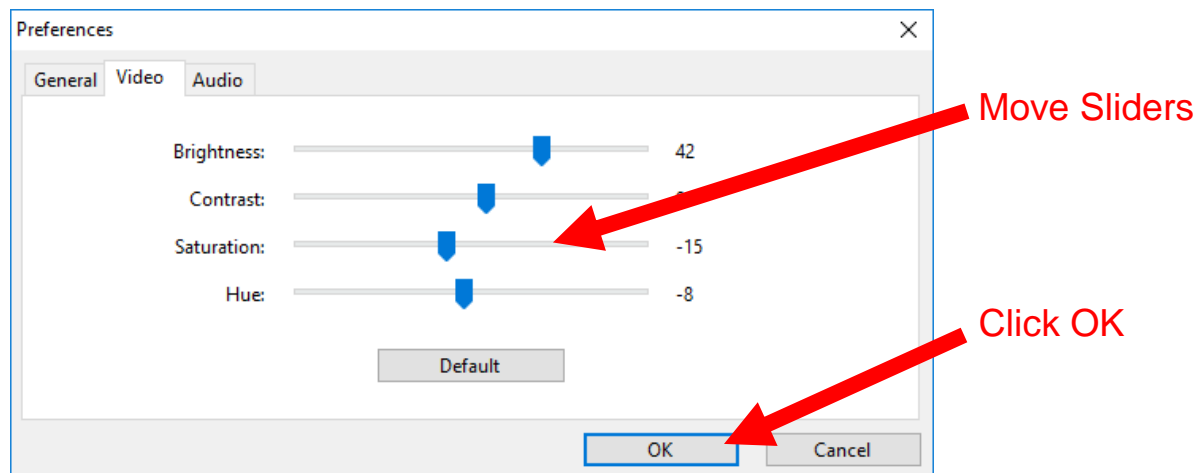
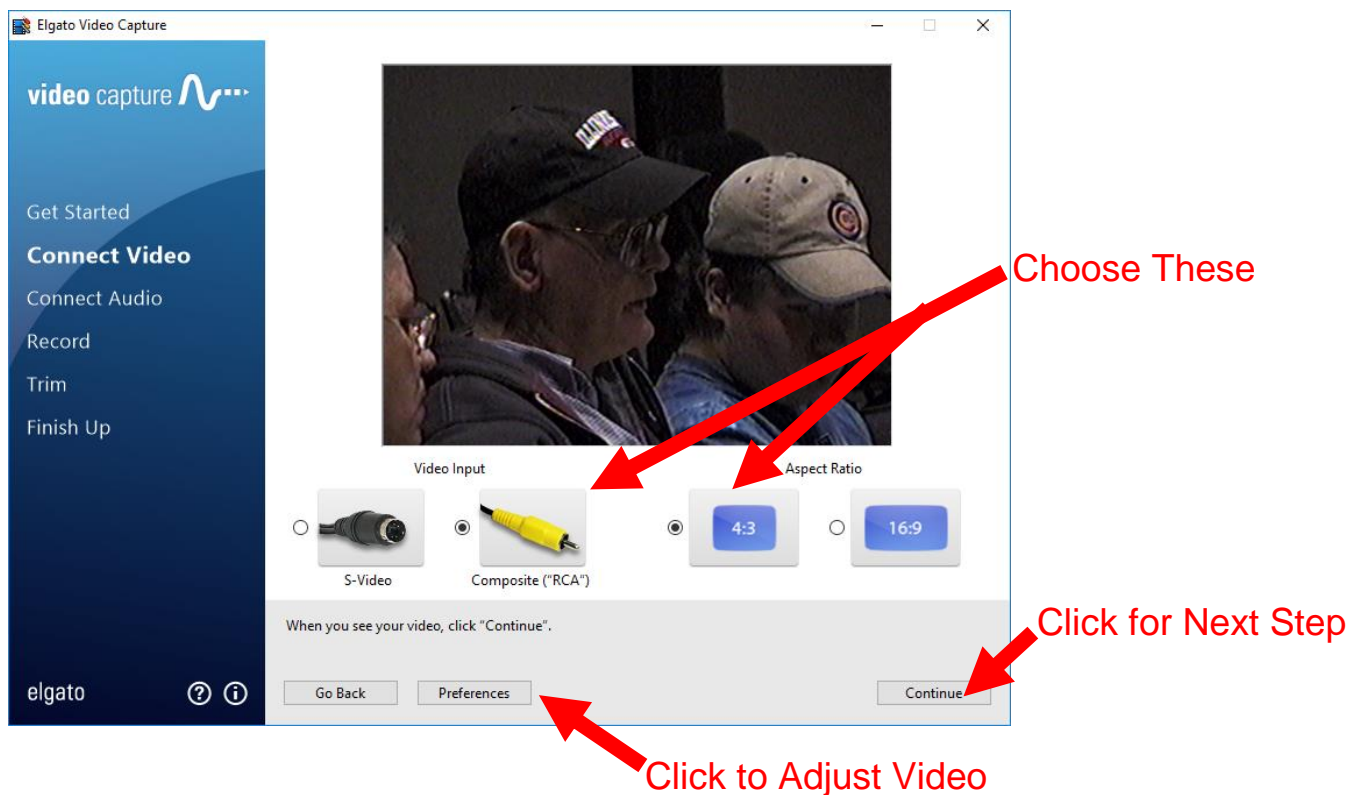
10. Name your movie and click "Continue"



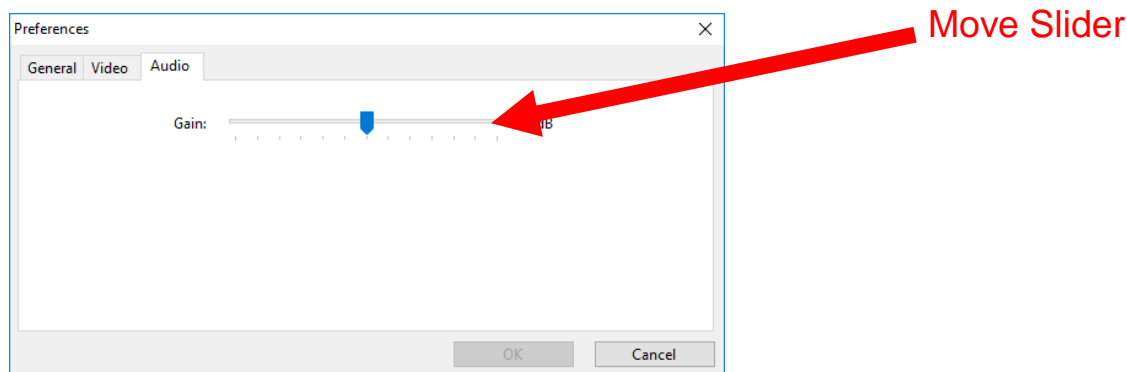
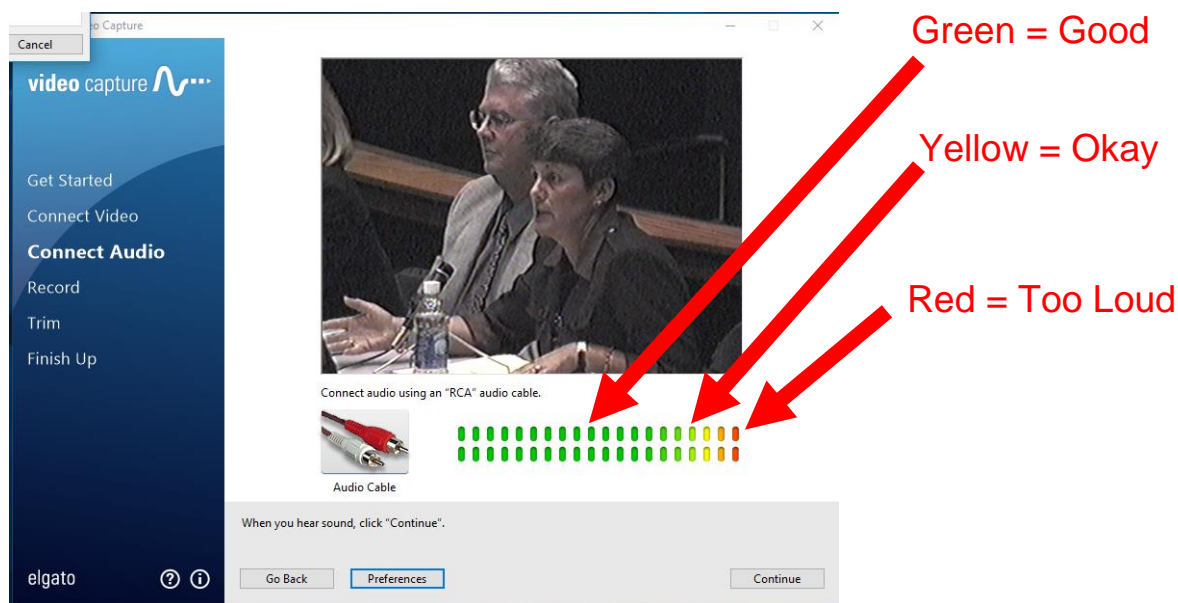
11. Press PLAY on the remote. Alternately you can open the view screen on the left of the camera and push the Enter button.



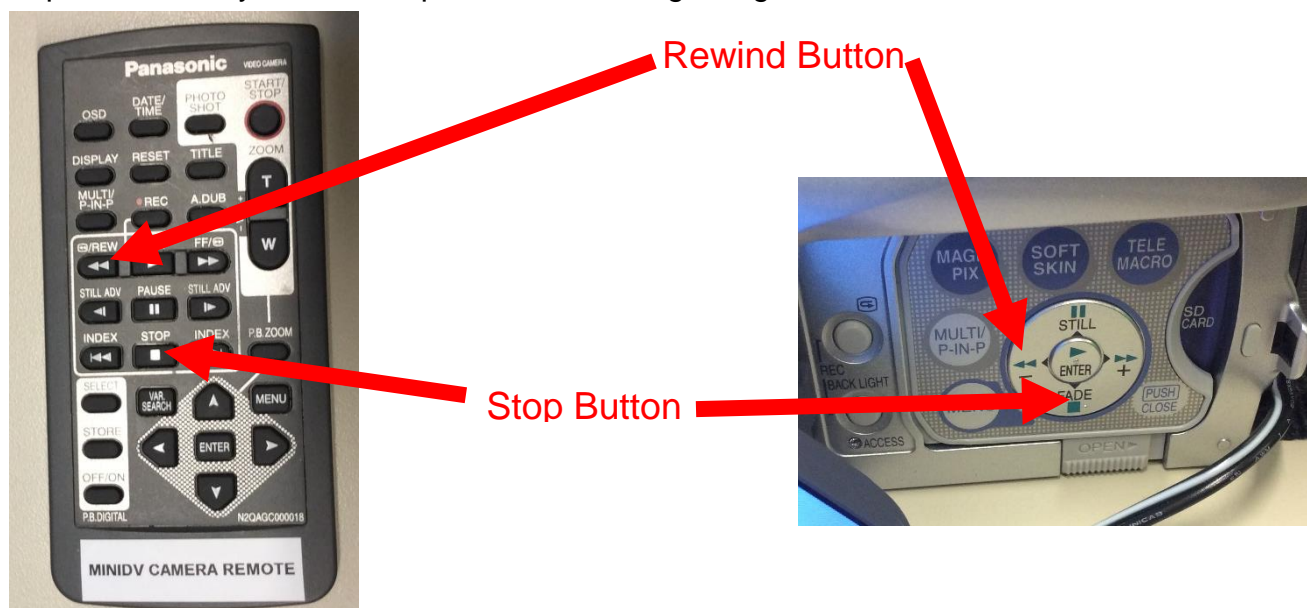
12. Make sure Composite RCA and aspect ratio 4:3 are chosen. If your video looks dark or discolored click on Preferences and choose the Video tab. Move the sliders until the video looks good to you, then click OK. Click Continue to move to the next step



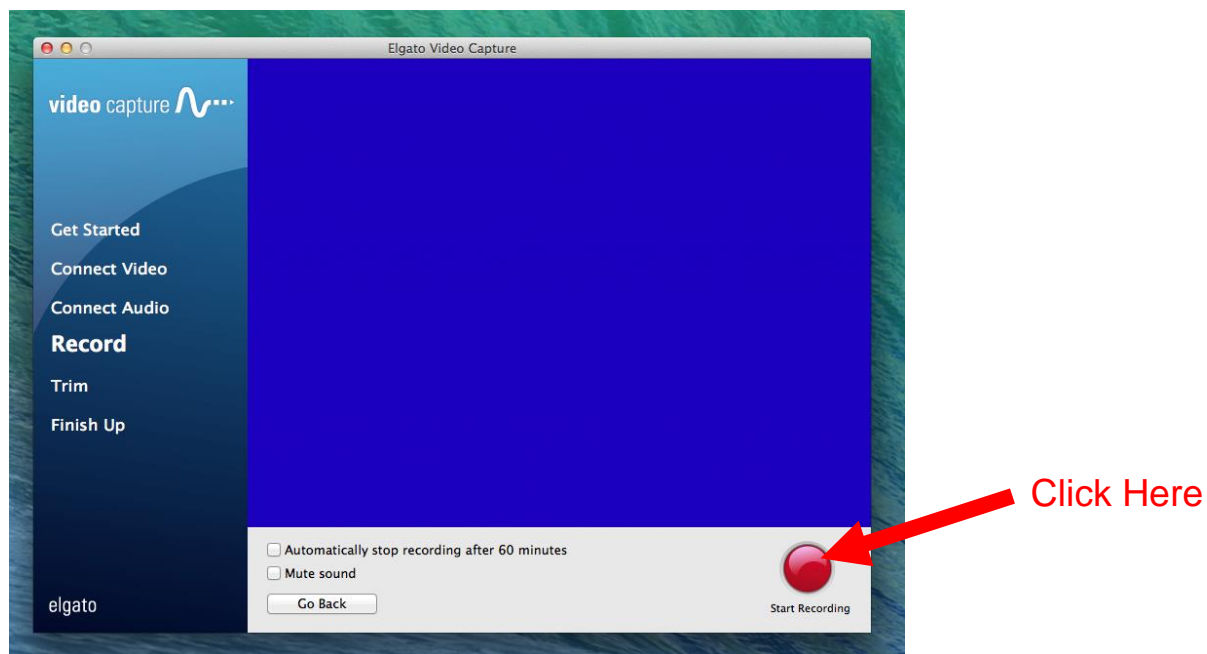
13. Check your video's audio. Make sure the green lights are lit to at least the middle of the display, but that the red lights are not lit. If the red lights are lit, click on Preferences, then the Audio tab, and move the Gain slider to the left. If the sound is very quiet and only two or three green lights are lit, move the Gain slider to the right. Click OK to set your changes and click Continue.



14. Stop and rewind your video tape back to the beginning

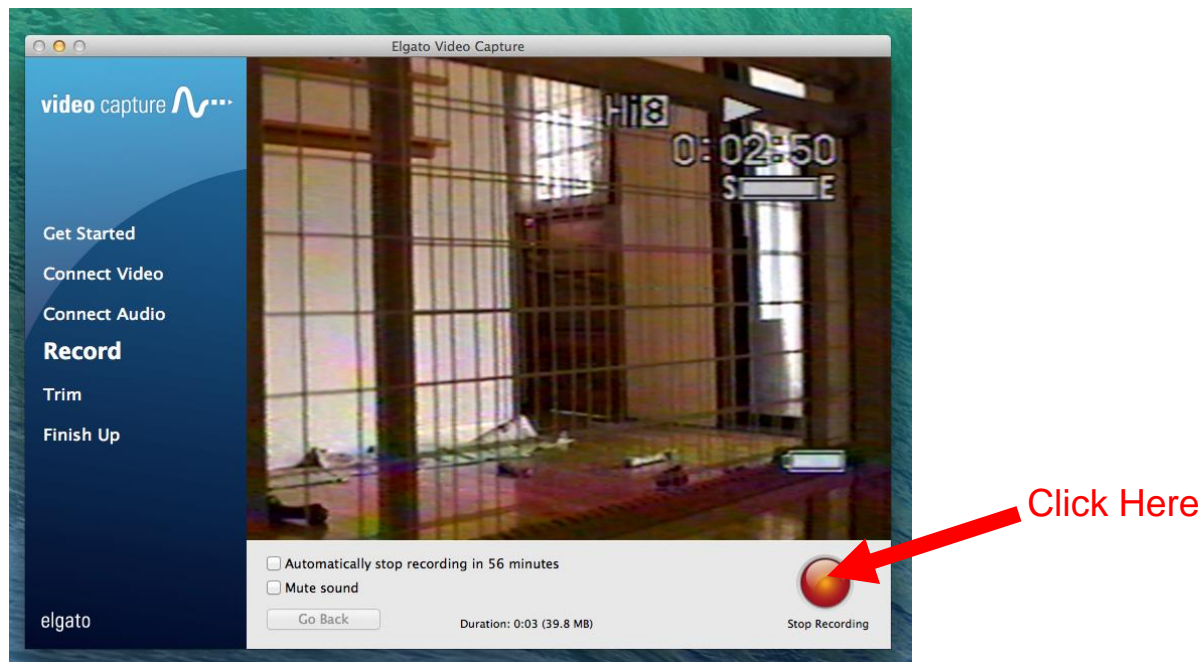


15. Click Start Recording

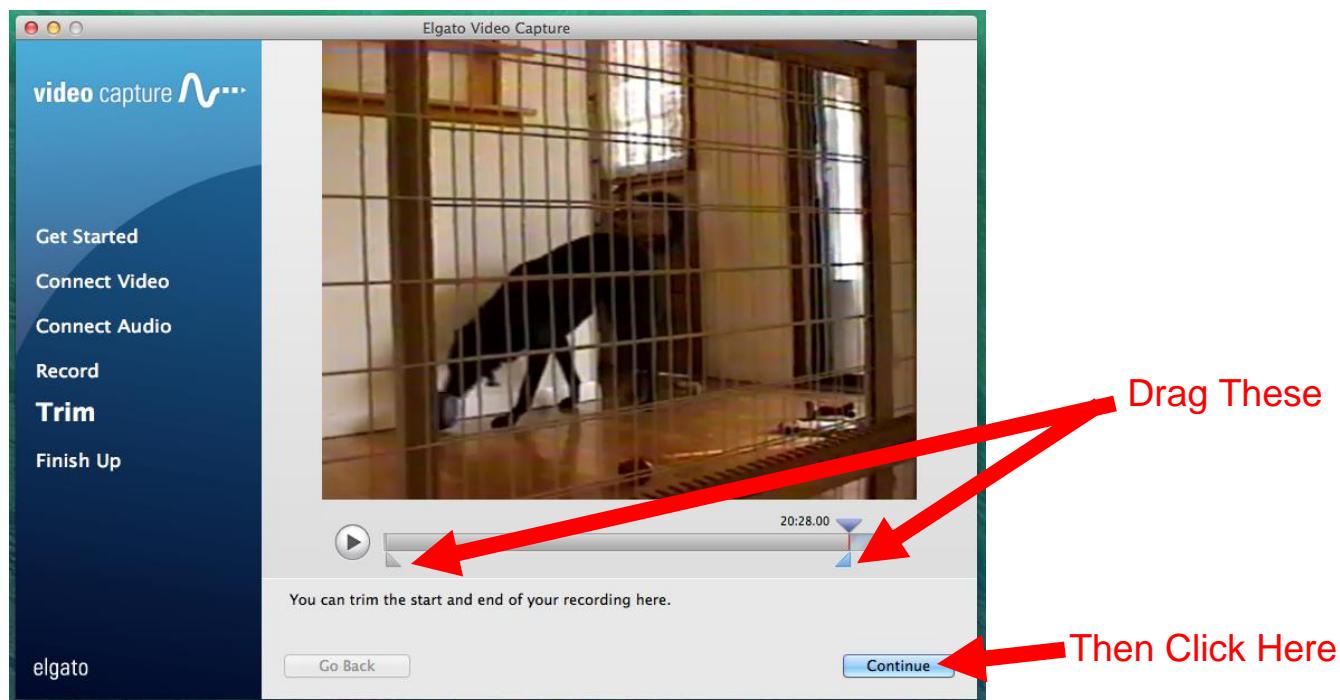


16. Restart your video tape

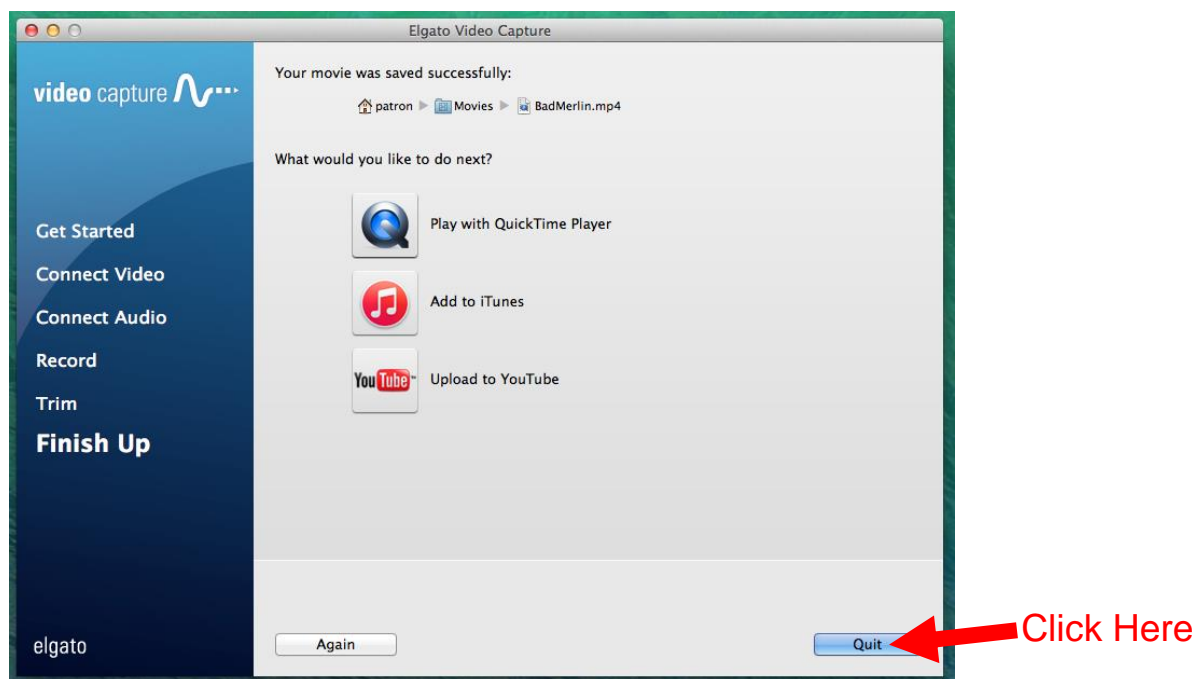
17. When the tape is finished click Stop Recording



18. You will now be given the option to trim the beginning and end of your recording. Drag the lower triangles to trim the video and click "Continue"



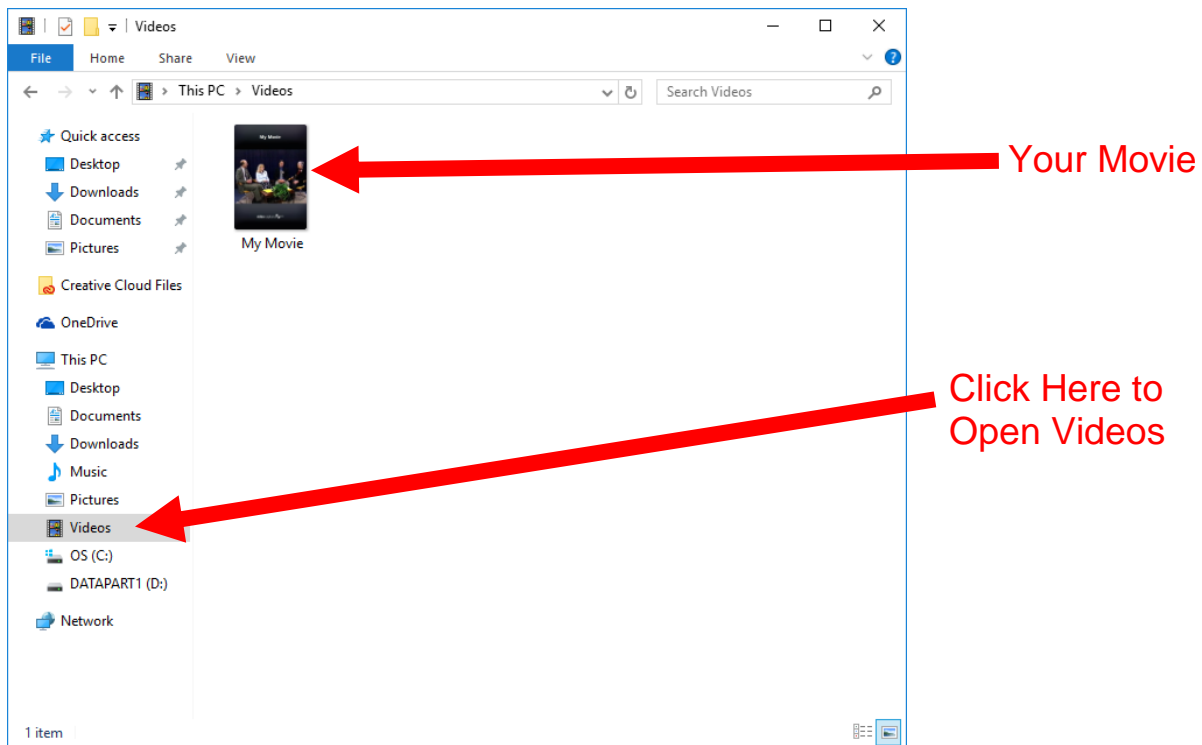
19. Your video will be saved in the computer's Movies folder. Click "Quit"



20. Click on the File Explorer



21. Locate your movie in Videos and save it to the storage device of your choice.



22. Eject your video tape by sliding the Open/Eject button forward and pushing the plastic cover to the right. Disconnect the audio cable and carefully remove the power pack by pressing and holding the gray button labeled PUSH above the power pack and sliding the power pack up. Return the camera and remote to the New Media Assistant desk.



Slide Forward



Press This